

PRODUCT DESCRIPTION:

The LC.20 pump is equipped with:

- Oil check valve
- Exhaust mist eliminator
- Automatic floating oil recovery valve
- Adjustable inlet fitting
- Continuously working gas ballast
- Thermal protector (1~ only)

Compact design, low noise level, simple oil check and refill and ease of maintenance, are the main features of this pump.

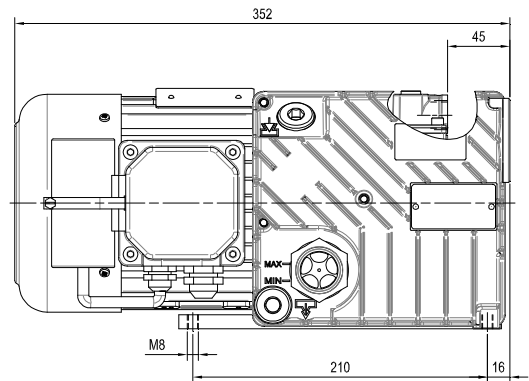
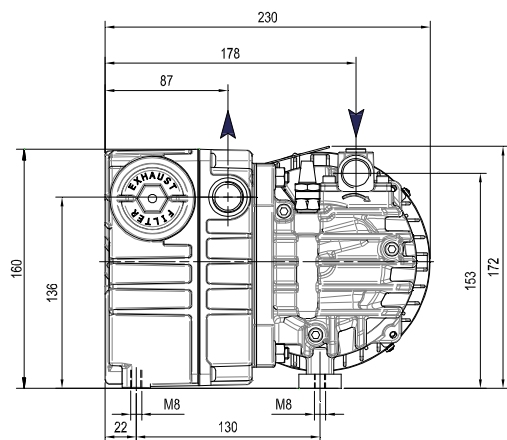
The damping and recovery system, equipped with a by-pass, together with the new float type oil recovery valve, ensures the absence of oil vapours at the outlet.

Moreover, a sealing device prevents the oil from being sucked back should the pump stops under vacuum.

The standard version is suitable for continuous operation within a pressure range from 400 to 2 mbar (Abs.).

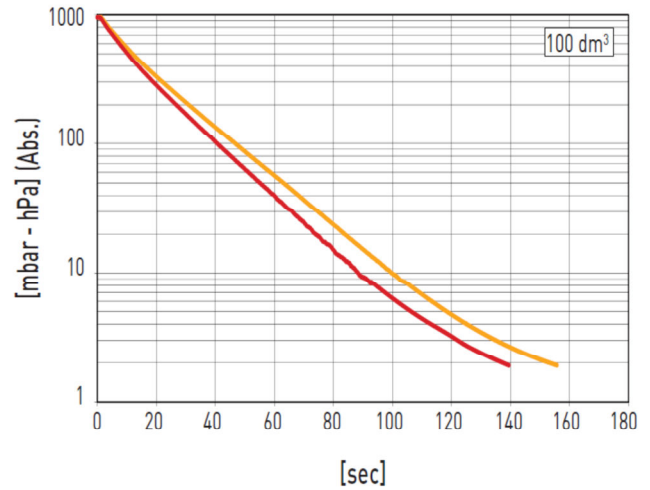
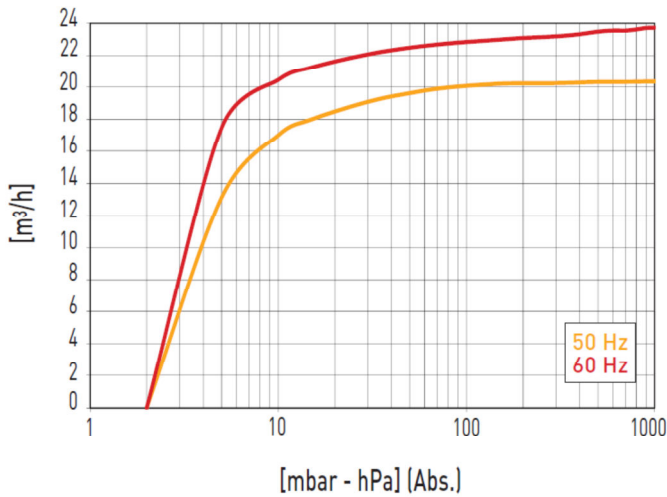
MAIN APPLICATION FIELDS:

Vacuum packaging machines; sack filling machines; vacuum precious metal casting machines; dental field; graphic and paper industry; CNC marble and glass machines; vacuum lifting machines; garage equipment.



Subject to change without prior notice

Main accessories	LC.20
Minor spare parts kit	K9601066
Major spare parts kit	K9601066/1
Shock mounts	3 x 1503007
Inlet filter	9001010
Stepped hose fitting	2103010 (Ø17)
Vacuum gauge	9009009



NOTE: Graph shows inlet pressure at a temperature of 20°C (tolerance ±10%)

Subject to change without prior notice

		LC.20	
		50 Hz	60 Hz
Catalog code		9601066	
Nominal capacity	m ³ /h	20	24
Total final pressure (Abs)	mbar - hPa	2	
Max inlet pressure for water vapour	mbar - hPa	15	
Max water vapour pumping rate	kg/h	0,25	
Motor power	(1~/3~) kW	0,75 / 0,75	0,90 / 0,90
Nominal r.p.m.	n/min	2800	3300
Noise level (UNI EN ISO 2151 - K 3dB)	dB(A)	64	67
Weight	(1~/3~) kg [N]	19 [186,4] / 17 [166,8]	
Type of oil	cod. DVP	BV32 (SW40)	
Oil quantity	min ÷ max dm ³	0,45 ÷ 0,50	
Pump intake / outlet		1/2"G / 1/2"G	
Continuous-duty working range (Abs)	mbar - hPa	400 ÷ 2	
Operating temperature @ 20°C	°C	60 ÷ 65	65 ÷ 70
Required room temp. for place of installation	°C	12 ÷ 40	
Ambient temperature for storage/transport	°C	-20 ÷ 50	
Max humidity / altitude		80% / 1000m s.l.m *	

(*) Please contact us if environmental conditions are different from those prescribed.