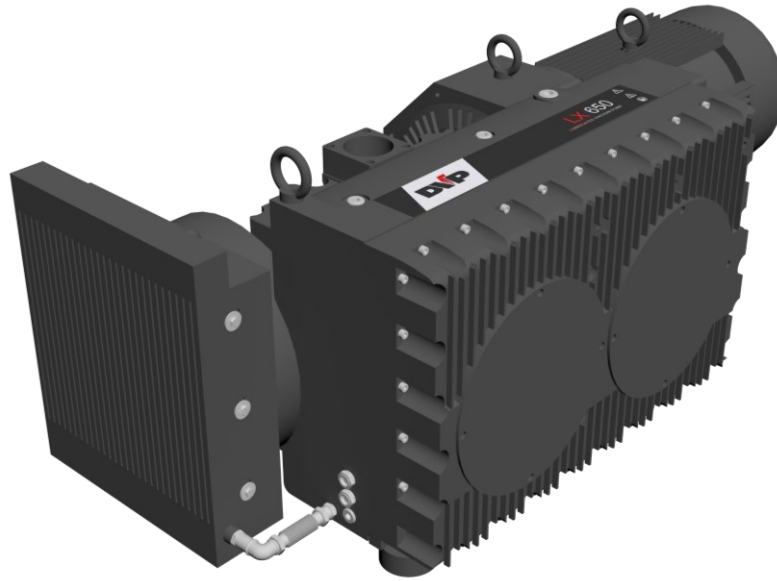


LX 550 – LX 650

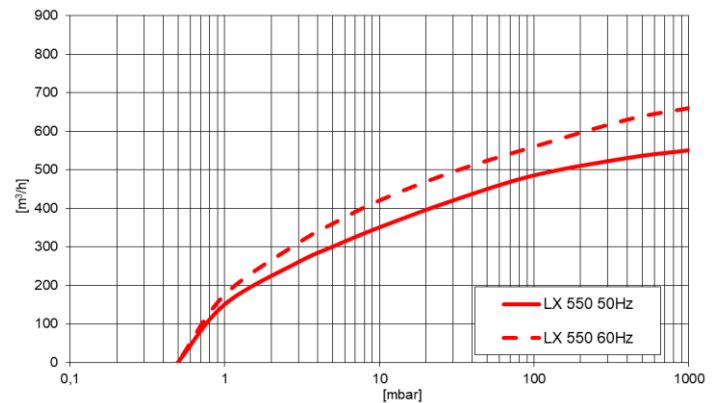
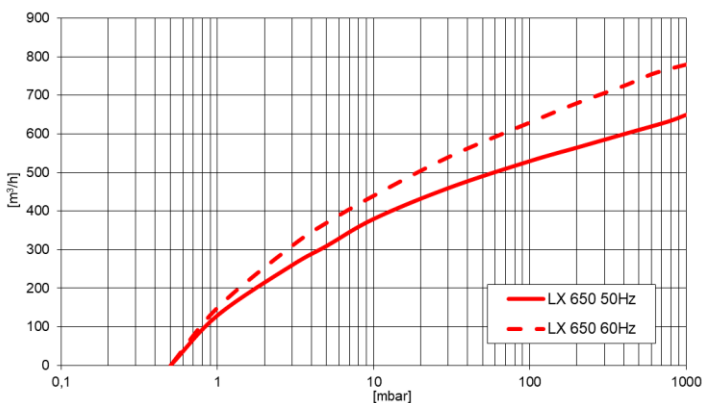
OIL-LUBRICATED ROTARY VANE VACUUM PUMP



TECHNICAL DATA

| | | LX 550 | | LX 650 | |
|-------------------------------------|-------------------|-----------|-----|-----------|-----|
| CODE | | 9603046 | | 9603047 | |
| FREQUENCY | Hz | 50 | 60 | 50 | 60 |
| NOMINAL CAPACITY | m ³ /h | 550 | 660 | 650 | 780 |
| TOTAL FINAL PRESSURE (Abs) | mbar –hPa | 0,5 | | 0,5 | |
| Continuous-duty Working Range (Abs) | mbar –hPa | 200 ÷ 0,5 | | 200 ÷ 0,5 | |
| MOTOR POWER | kW | 15 | 18 | 15 | 18 |
| OIL QUANTITY (MIN - MAX) | dm ³ | 16 | | | |
| OIL TYPE | COD. DVP | SW 100 | | | |
| NOISE LEVEL (UNI EN ISO 2151 – 3db) | dB (A) | 82 | | 83 | |
| WEIGHT | Kg | 436 | | 459 | |

GRAPHS



NOTE: Graphs show inlet pressure at temperature of 20°C (tolerance ±10%)

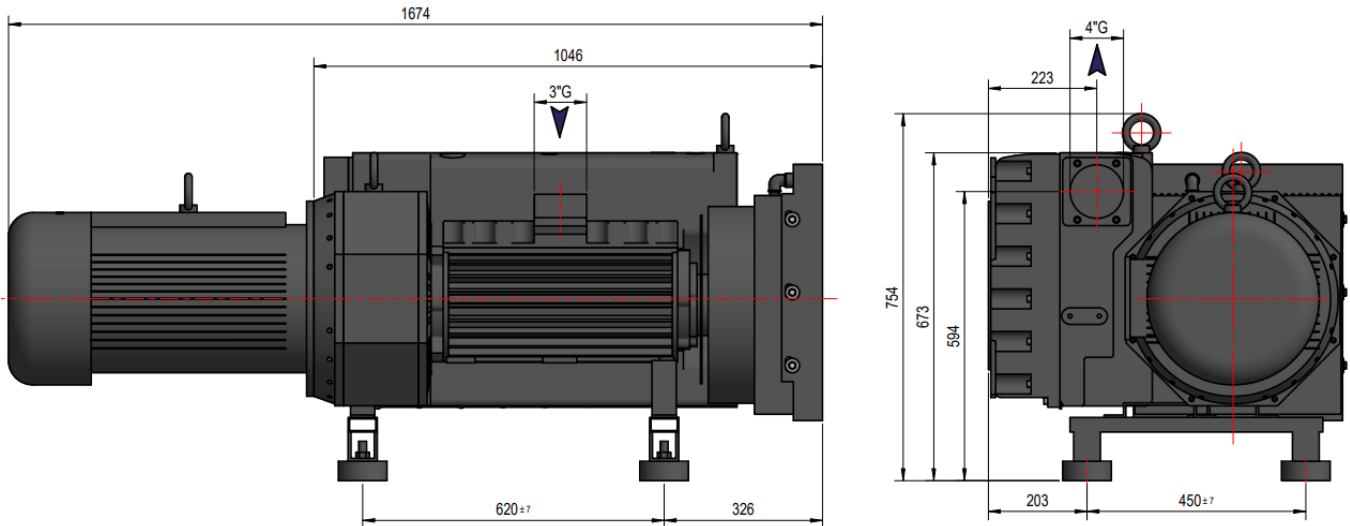
sales@vacuumpumpsuk.com +44(0)113 208 8507

VPUK
VACUUM PUMPS UK
www.vacuumpumpsuk.com

LX 550 – LX 650

OIL-LUBRICATED ROTARY VANE VACUUM PUMP

DIMENSIONS



MOTORS

LX 550 [3 phase]

| ID | POWER [kW] | TENSION | FREQUENCY | EFFICIENCY | RPM | |
|----|------------|-----------|-----------|------------|------|----|
| SR | 15 | Δ400/Y690 | 50 | IE3 | 1465 | |
| | 18 | Δ480/Y830 | 60 | IE3 | 1758 | |
| SG | 18,5 | Δ400/Y690 | 50 | IE3 | 1470 | UL |
| | | Δ460/Y795 | 60 | | 1765 | |

LX 650 [3 phase]

| ID | POWER [kW] | TENSION | FREQUENCY | EFFICIENCY | RPM | |
|----|------------|-----------|-----------|------------|------|----|
| SR | 15 | Δ400/Y690 | 50 | IE3 | 1465 | |
| | 18 | Δ480/Y830 | 60 | IE3 | 1758 | |
| SG | 18,5 | Δ400/Y690 | 50 | IE3 | 1470 | UL |
| | | Δ460/Y795 | 60 | | 1765 | |

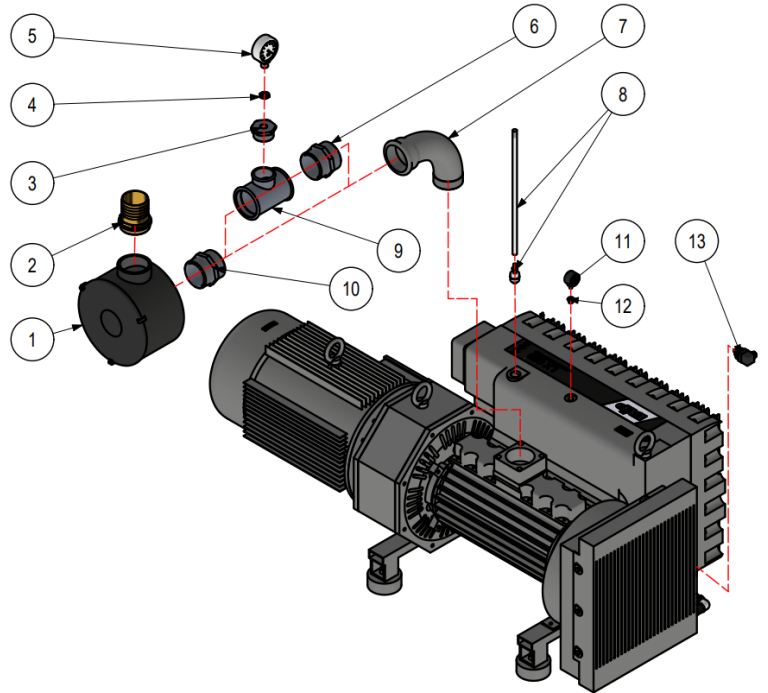
Subject to change without prior notice

LX 550 – LX 650

OIL-LUBRICATED ROTARY VANE VACUUM PUMP

ACCESSORIES

| | | Code |
|----|--------------------|---------|
| 1 | FCM FILTER | 9001041 |
| 2 | FITTING | 2103126 |
| 3 | REDUCTION | 2001049 |
| 4 | NUT | 0202004 |
| 5 | VACUUM GAUGE | 9009003 |
| 6 | NIPPLES | 2201019 |
| 7 | CURVE | 2101038 |
| 8 | LEVEL SWITCH | 9013021 |
| 9 | T-FITTING | 2106088 |
| 10 | NIPPLES | 2201019 |
| 11 | PRESSURE GAUGE FCI | 9014003 |
| 12 | REDUCTION | 2001012 |
| 13 | THERMOSTAT | 9019004 |



Subject to change without prior notice